


Table of Contents

Making Multiple File Projects (MFP) in PatternFinder (PF)	2
Create a MFP	2
Adding Files to MFP	4
Adding SFP to MFP	5
Removing Files from MFP	6
Removing SFP from MFP	7

Making Multiple File Projects (MFP) in PatternFinder (PF)

Create a MFP

Click the **Create a New Project** button  and the following window appears:

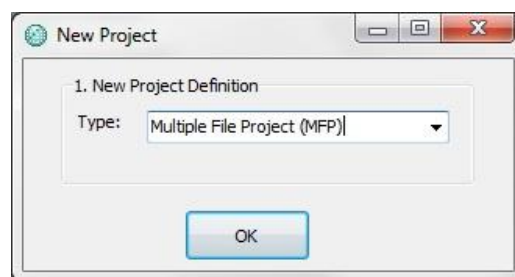


Figure 1 New Project

Select Multiple File Project (MFP).

Note that you can also create a MFP by choosing **Project-MFP-New** (see figure 2)

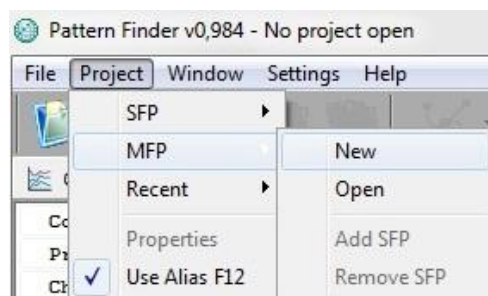


Figure 2 New MFP

Once MFP has been selected the following window appears:

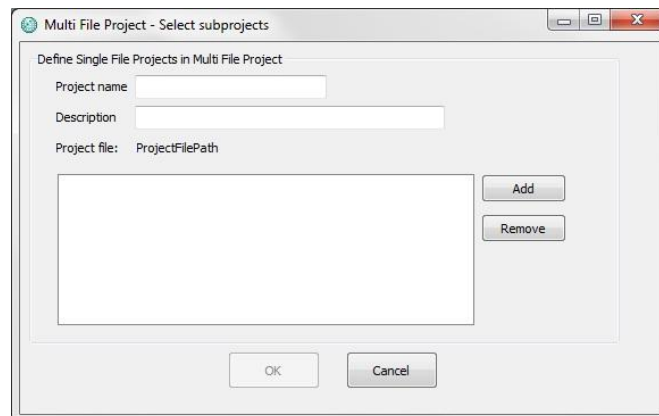


Figure 3 Select Subprojects

Enter a name and a short description of the project. Add the files you want to use in the project by clicking the **Add** button (see figure 4).

You can add both DAT and SFP files. If a DAT file is added then a new SFP will be created.

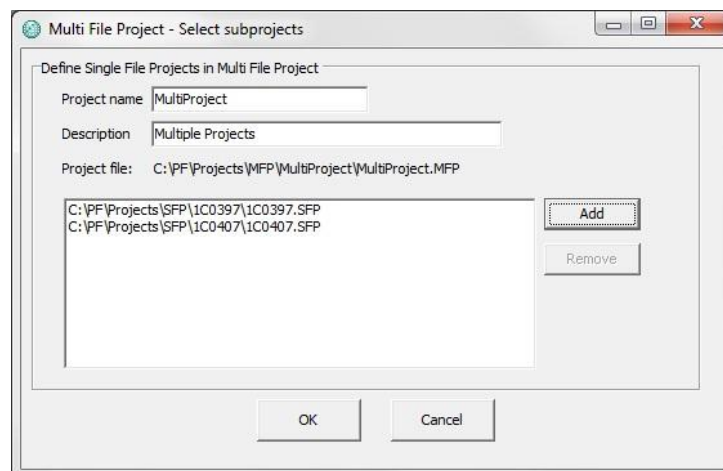


Figure 4 Select Subprojects

Press OK and the name of the project as well as its location appears on the **PF** header (see figure 5). You can see the project name in the Overview Pane under **Projects** and the DAT file under **Charts**.

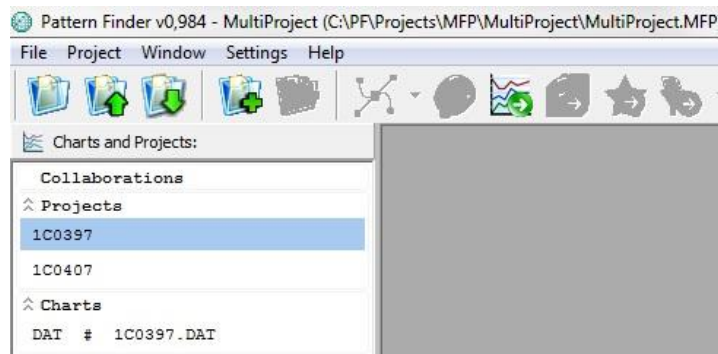


Figure 5 Overview Pane

When double-clicking on one of the projects in the Overview Pane, the corresponding charts will be visible in the pane below (see figure 6).

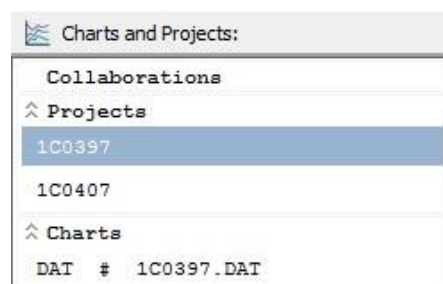


Figure 6 Overview Pane

Adding Files to MFP

To add files to a MFP, click on the **Add Files to Project** button.



The file will be automatically stored in the Project directory and listed under **Collaborations** in the Overview Pane (see figure 7).

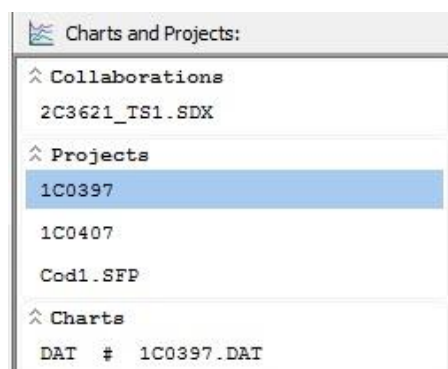


Figure 7 Add Files to MFP

Adding SFP to MFP

To add SFP to MFP choose **Project-MFP-Add SFP** and select the file you want to add to the project.

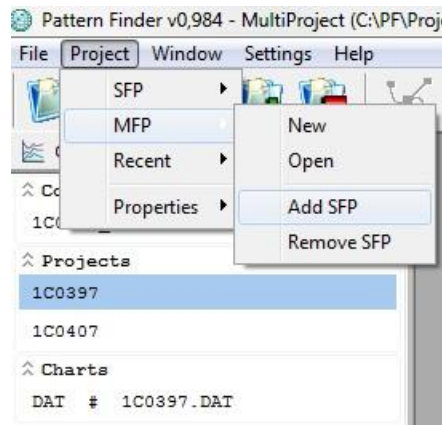


Figure 8 Add SFP to MFP

The project will be stored under **Projects** in the Overview Pane (see figure 9).

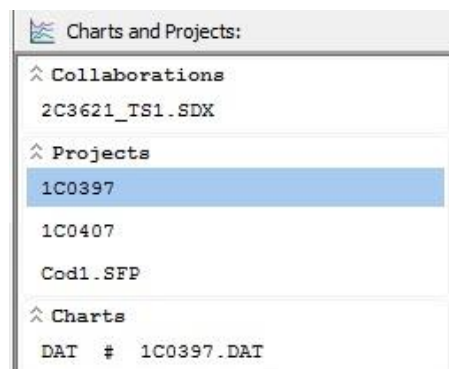



Figure 9 Add SFP to MFP

Removing Files from MFP

To remove files from a MFP highlight the file you wish to remove on the Overview Pane and click the **Remove Files from Project** button . The following window appears:

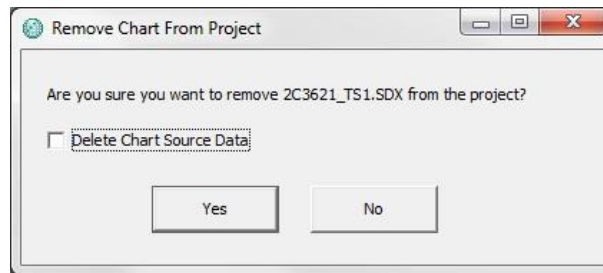


Figure 10 Remove Files from MFP

It is important to be careful when removing files. If you check the **Delete Chart Source** box, the file will be removed both from the Overview Pane and the Project directory. If the file is not saved in another location it will be lost.

If you do not check the **Delete Chart Source** box, the file will only be removed from the Overview Pane, but will still be accessible in the Project directory.

Removing SFP from MFP

To remove SFP from MFP, select **Project-MFP-Remove SFP** (see figure 11).

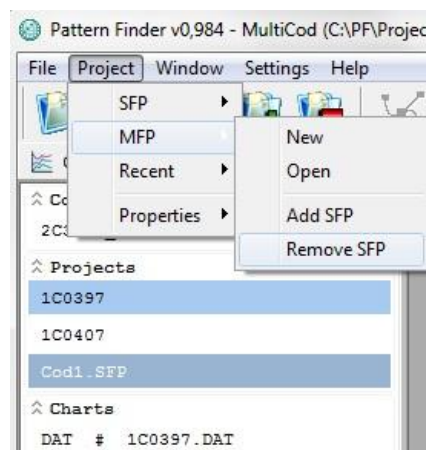


Figure 11 Remove SFP from MFP

The following window appears:

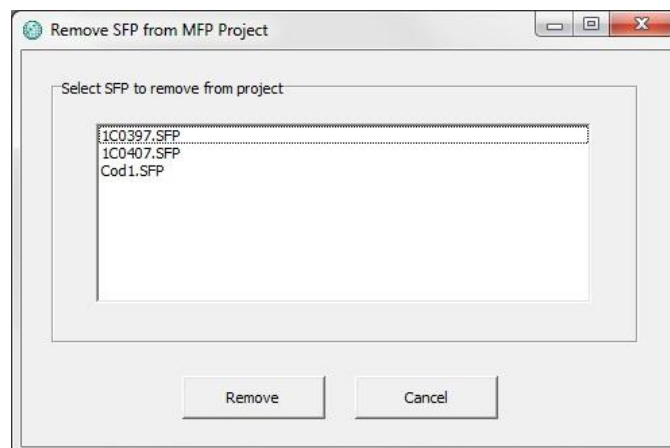


Figure 12 Remove SFP from MFP

Highlight the SFP you want to remove and click the **Remove** button. The SFP will be removed from the Overview Pane.